



Web-based Dashboard Generator

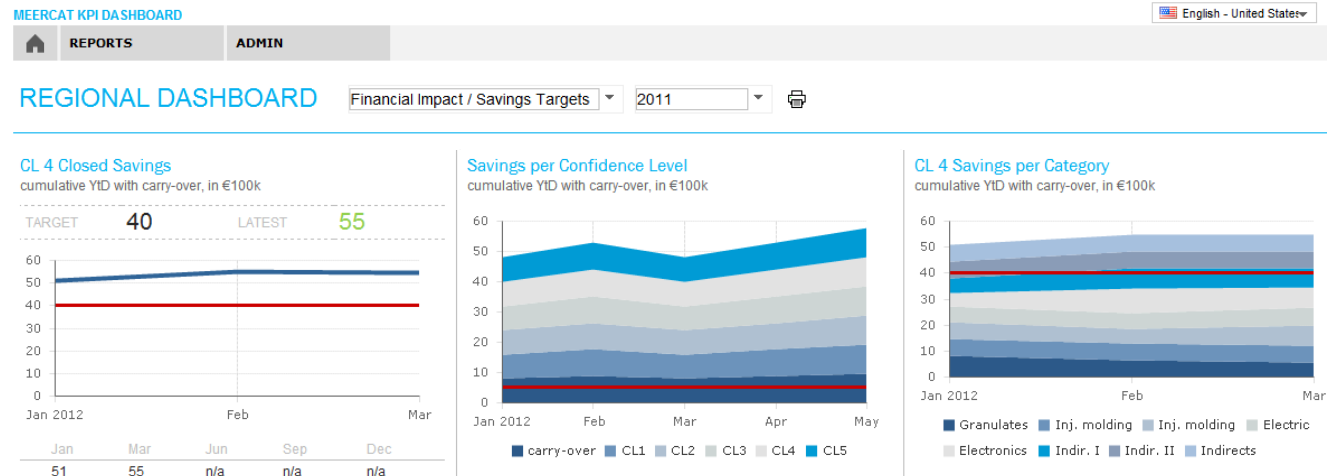
Meercat KPI Dashboard



[procurement](#). supply chain risk management

KPI dashboards are the bread and butter of corporate reporting. Most of them are Excel-based, since it's too expensive to adjust existing BI tools.

Are you looking for a web-based tool, which would allow you to gather Key Performance Indicators from various systems and business units and display them in customised dashboards?



Typical situations where flexible KPI dashboard are needed

- You work with and report to multiple stakeholders and need a tool to easily gather the data and communicate the results
- You need to have an overview of your savings initiatives
- You'd like to know how efficient your organisation is worldwide
- You need to track the progress and effects of your projects
- You have world-wide multiple ERP systems and you need to temporarily integrate the necessary data



Meercat KPI: a flexible, web-based tool for easy gathering and reporting of Key Performance Indicators

Client requirements



web-based

- Controlled access for all stakeholders
- World-wide access
- Integrated communication



no limits

- Unlimited users
- Unlimited KPIs
- Unlimited dashboards



flexible layouts

- Create new dashboards in minutes
- Freely definable dashboard layouts – can be adjusted at any time



integrated communication

- No more emails with Excel® files
- Automatic reminders to update data



Now imagine that within 1 hour you could: create this dashboard, add data and communicate to the stakeholders.

Sample KPI dashboard: Supplier Structure

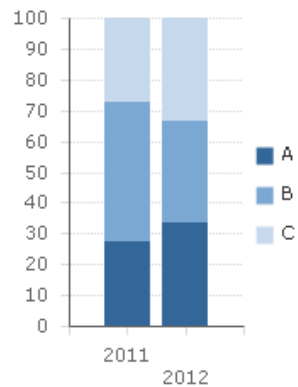
REGIONAL DASHBOARD

Supplier Structure

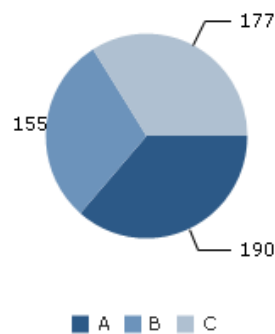
2012



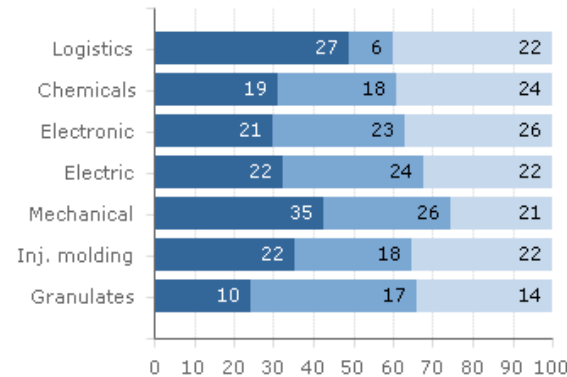
ABC Suppliers / Volume
% evaluated Spend FI, 2011



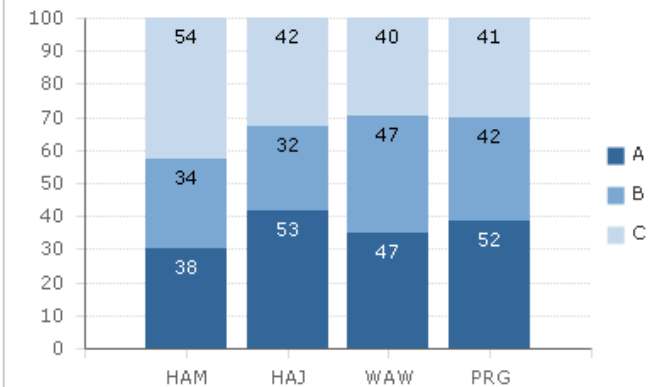
ABC Suppliers
evaluated suppliers



ABC Suppliers per Category
evaluated suppliers



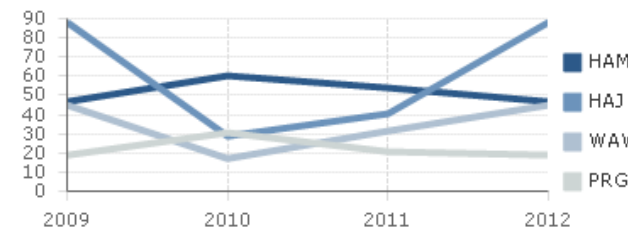
ABC Suppliers per Site
evaluated suppliers



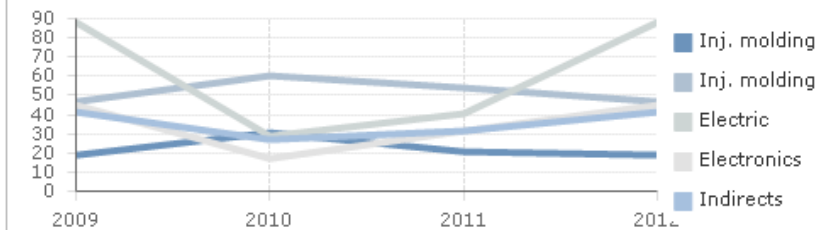
Average Spend per Supplier
in €k



Average Spend per Supplier per Site
in €k

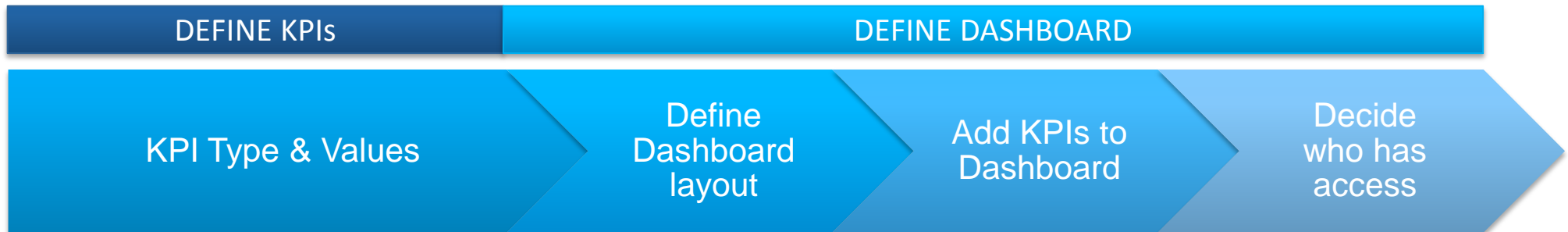


Average Spend per Supplier per Category
in €k



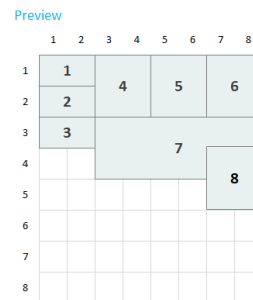
KPI Pool allows the re-use of the same KPI in several dashboards. In each case it can be shown from a unique perspective.

Defining KPIs and Dashboards

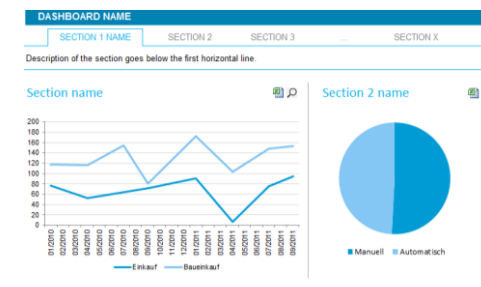


- How often does the update take place? (daily, weekly, monthly, quarterly, yearly)
- Actual values or forecasts?
- Validation (type, min & max values)
- Target settings
- Who receives emails with requests for update?
- Dimension: Totals, per Business Unit, per Department, per Category or any mix of the above

- Define Sections (groups of KPIs)
- Define Layout within sections



- Define chart types and their look & feel
- Add KPIs as data series to charts
- Define time periods and filters
- Add individual users to each Dashboard
- Define people who can update the values (manual / Excel)



Creating a new dashboard is a simple matter of adding KPIs, deciding on their position and chart types

Dashboard

A Dashboard is composed of a series of SECTIONS (pages) that are themselves divided into a matrix.

It's up to you decide where to place individual charts and how big to make them.

You decide which KPIs should be displayed and whether the values should be gathered for the whole company, business unit, project, department or a category.

MEERCAT KPI DASHBOARD English - United States (Zaleski Matt) [Logout](#)

REPORTS **ADMIN**

DASHBOARD SET-UP

DASHBOARD LAYOUT **SECTIONS** ACCESS

Spend & Savings Overview
 Details of Savings
 Supplier Overview
Geography & Currencies / Supplier structure
 Supplier Quality
 eSourcing / eEfficiency

SECTION NAME ELEMENTS

#	Element	KPI	
1	Spend per Currency	Spend per Currency per Site	🔍 🗑️
2	Spend per Currency per Category	Spend per Currency per Site and Category	🔍 🗑️
3	Best Cost Country Sourcing	BCCS	🔍 🗑️
4	BCCS per Category	BCCS	🔍 🗑️
5	Average Spend per Supplier	Average Spend per Supplier	🔍 🗑️
		Average Spend per Supplier per Category and Site	🔍 🗑️
		Frame contract ratio (per Site)	🔍 🗑️
		Frame contract ratio (per Category and Site)	🔍 🗑️

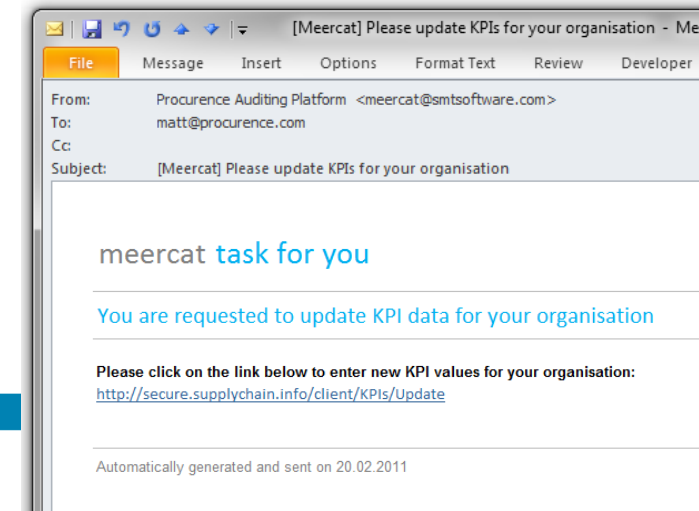
SITE DASHBOARD Geography & Currencies / Supplier 2012 HAM



You can define who is responsible for updating the KPIs and the system makes sure the data is entered

Data entry: Manual

- Users receive automatic email reminders to update KPIs
- By clicking on the provided link, they arrive at the data entry page, where the system asks them for the information.
- Supervisor has an overview which data is missing and can contact the responsible persons to follow up.
- You can edit data in multiple sessions, as they arrive.



KPI DATA ENTRY

Please enter the KPI Data for the indicated organisations and time spans.

Annual data

KPI NAME	BU / PROJECT	DEPARTMENT	CATEGORY	PERIOD	UNIT	VALUE	SKIP?
Purchasing Volume	HQ	Einkauf		2009	EUR	<input type="text"/>	<input checked="" type="checkbox"/>
Purchasing Volume	HQ	Baueinkauf		2010	EUR	<input type="text"/>	<input type="checkbox"/>
Purchasing Volume	Project 1 (DE)		Transportation	2009	EUR	<input type="text"/>	<input type="checkbox"/>
Purchasing Volume	Project 1 (DE)		Luggage handling	2010	EUR	<input type="text"/>	<input type="checkbox"/>

Quarterly data

KPI NAME	BU / PROJECT	DEPARTMENT	CATEGORY	PERIOD	UNIT	VALUE	SKIP?
Cost per Purchase order	HQ	Einkauf		2009 / Q2	EUR	<input type="text"/>	<input checked="" type="checkbox"/>
Cost per Purchase order	HQ	Baueinkauf		2009 / Q3	EUR	<input type="text"/>	<input type="checkbox"/>
Purchase order duration	HQ	Einkauf		2009 / Q4	Days	<input type="text"/>	<input type="checkbox"/>
Purchase order duration	HQ	Baueinkauf		2010 / Q1	Days	<input type="text"/>	<input type="checkbox"/>

Monthly data

No KPIs to enter

Daily data

No KPIs to enter

SAVE

CANCEL



You can also upload the data in bulk using Excel

Data entry: Excel

- The system automatically creates applicable Excel templates for each dashboard
- Once the data is uploaded, the system verifies their correctness, so that high quality can be maintained. Users are informed about the location and types of errors.
- KPI values can be manually corrected in the system afterwards.

MEERCAT KPI DASHBOARD

English - United States (Zaleski Matt) Logout

REPORTS ADMIN

KPI DATA IMPORT

1 Choose template

KPI Import Template (empty)

2 Upload completed file

Choose File No file chosen

3 Configure options

Entries found 240 Overwrite existing entries
- correct 235 If you click on continue, incorrect entries will be i
- incorrect 5

Error found

ROW	VALUE	ERROR TYPE
1	n/a	Missing value
8	Tedco Ltd.	Wrong type (expected: number)
10	13	Value below minimum (30)
15	87	Value above maximum (40)
20	1/1/1900	Incorrect date
22	87	Entry already exists
30	Eikauf	Incorrect KPI name
38	Port 3	Incorrect Business Unit
39	Project ITMaster	Incorrect Project
40	Motors	Incorrect Category



Meercat KPI shares all the key administrative functions with the main Meercat application

Administrative features

- Supports multiple languages
- Ability to add Business Units, Projects, Categories (Warengruppen) and Departments
- Complete user management
- SMS session authorisation if required
- Unlimited number of users
- Completely integrated with other Meercat modules
- Supplier access on demand

The screenshot displays the Meercat KPI administrative interface. At the top, there is a navigation bar with tabs for SUPPLIERS, AUDITS, MEASURES, REPORTS, RISKS, and ADMIN. The main content area is divided into several sections:

- EDIT USER:** A form for editing user details. Fields include First Name (Demo), Last Name (QM Auditor), Login (demo_qmauditor), Email (zaleski+demo_auditor@procurement.com), Status (Active), Department (Quality Management), and Business Unit (DEMO HQ). Buttons for 'RESET PASSWORD' and 'CHANGE BASIC DATA' are visible.
- USER DETAILS:** A form for user details. Fields include Title, Gender (male/female), Phone Number (+48 601453245), Country (Poland), Province, City, Street, and Post Code.
- USER ROLES:** A table with columns for Name and Description. Roles listed include User Admin, User (checked), Supervisor, Auditor (checked), Supplier, and Evaluator.
- DASHBOARD SET-UP:** A section for configuring the dashboard. It includes a list of sections (Bestellungen, Einsparungen, Prozesse, Effizienz, Mitarbeiter, Strategie) and a table for translations.

The 'DASHBOARD SET-UP' section shows a table for translations:

Language	Name	Description	
pl-pl	Ryzyka finansowe		
en-us	Financial		
de-de	Finanzielle Risiken		

At the bottom right, it says 'Displaying items 1 - 3 of 3'.



Know-how, customer service, flexibility

Procurement advantages

Why Procurement?

- **Know-how**
 - Set-up by experienced consultants and risk management professors, who implement evaluation and risk processes for multi-nationals
- **Excellent customer service**
 - Turnkey solutions – just log-on and start using the software, we take care of the rest
- **Flexibility**
 - Meercat can be adjusted to suit your needs, all within weeks

Trust our know-how

- Speakers at trade conferences



2nd SCRM Seminar 2010 Barcelona
"Effective Management In A Time Of Crisis"

- Supplier performance measurement, evaluation and risk management training / workshops



procurement. supply chain risk management

meercat. web-based software
supply chain risk management
supply chain assessment



procurement sp. z o.o.
ul. dereniowa 2/306
02-776 warsaw, poland

tel. +48 22 219 5400
info@procurement.com
www.procurement.com